

OBJEKT B, 2.NADSTROPJE, STANOVANJE 9

Stanovanje B.2.9

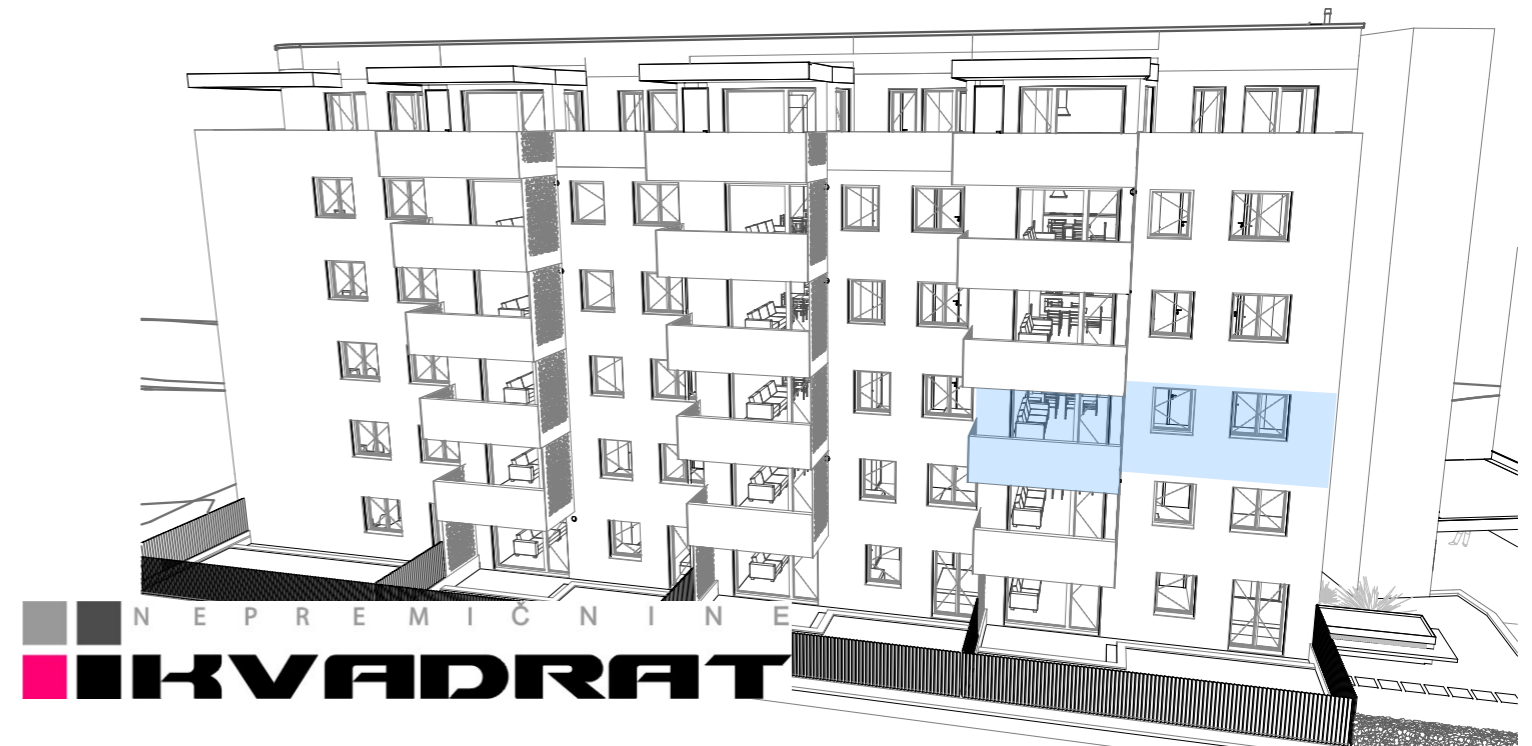
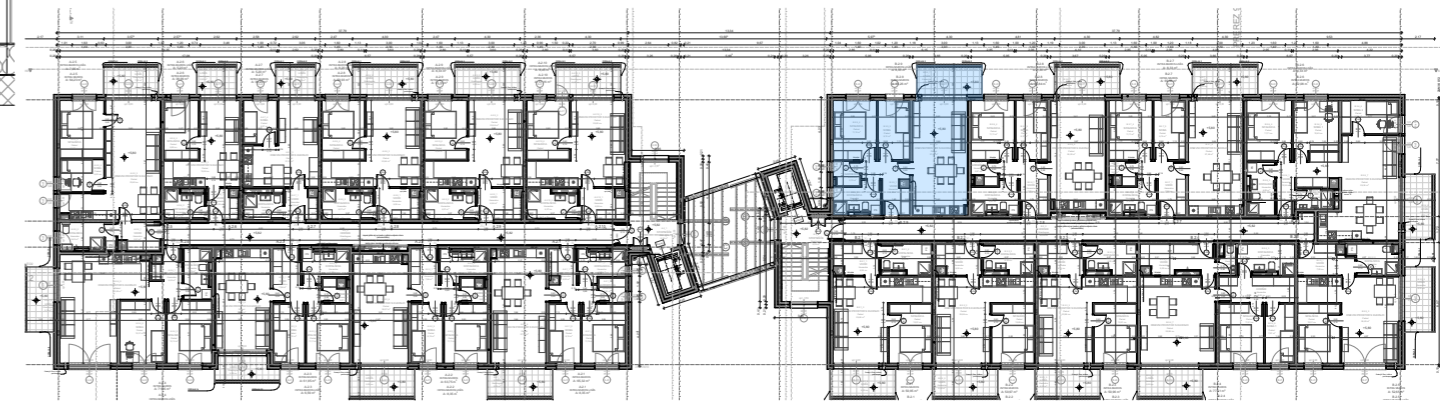
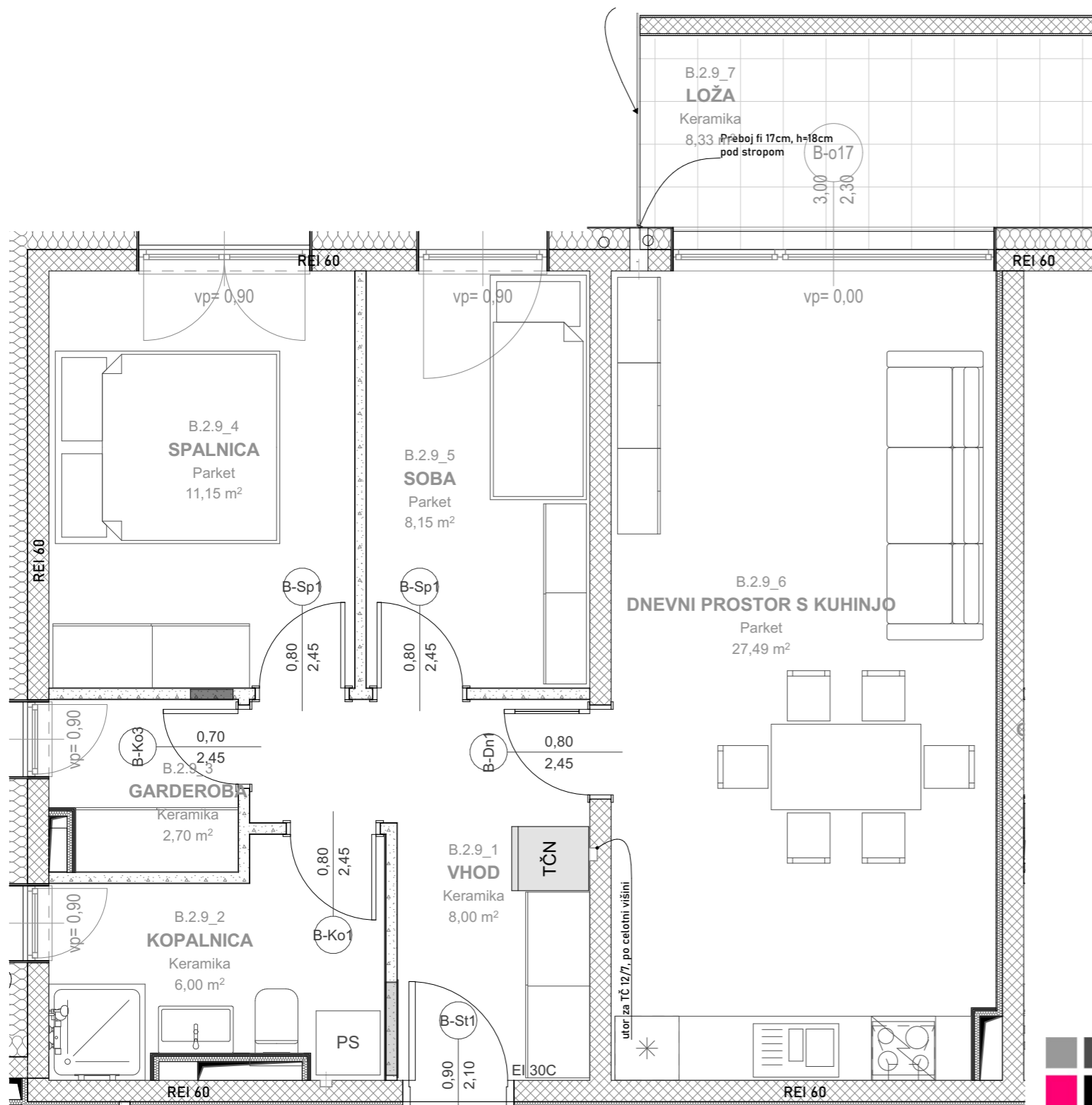
Št. pr.	Prostor	Tlak	Površina m2
B.2.9_1	VHOD	Keramika	8,00
B.2.9_2	KOPALNICA	Keramika	6,00
B.2.9_3	GARDEROBA	Keramika	2,70
B.2.9_4	SPALNICA	Parket	11,15
B.2.9_5	SOBA	Parket	8,15
B.2.9_6	DNEVNI PROSTOR S KUHINJO	Parket	27,49
			63,49 m²

Stanovanje B.2.9 LOŽA

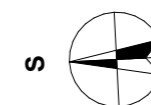
Št. pr.	Prostor	Tlak	Površina m2
B.2.9_7	LOŽA	Keramika	8,33
			8,33 m²

Stanovanje B.2.9 SHRAMBA

Št. pr.	Prostor	Tlak	Etaža	Površina m2
B.2.9_S	SHRAMBA	Kvarc	Klet 2	4,72
				4,72 m²



NEPREMIČNINE
KVADRAT



0 100 200cm